



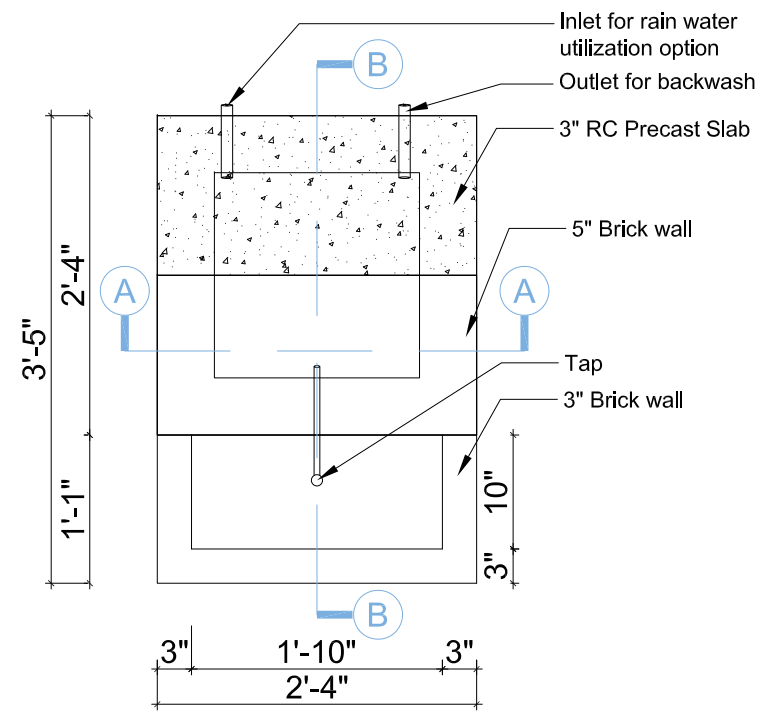
**PROJECT**  
**DESIGN AND DRAWING of UNIFIED HAND**  
**WASHING STATION**  
**BRICK MADE HAND WASHING STATION**

MARCH, 2023

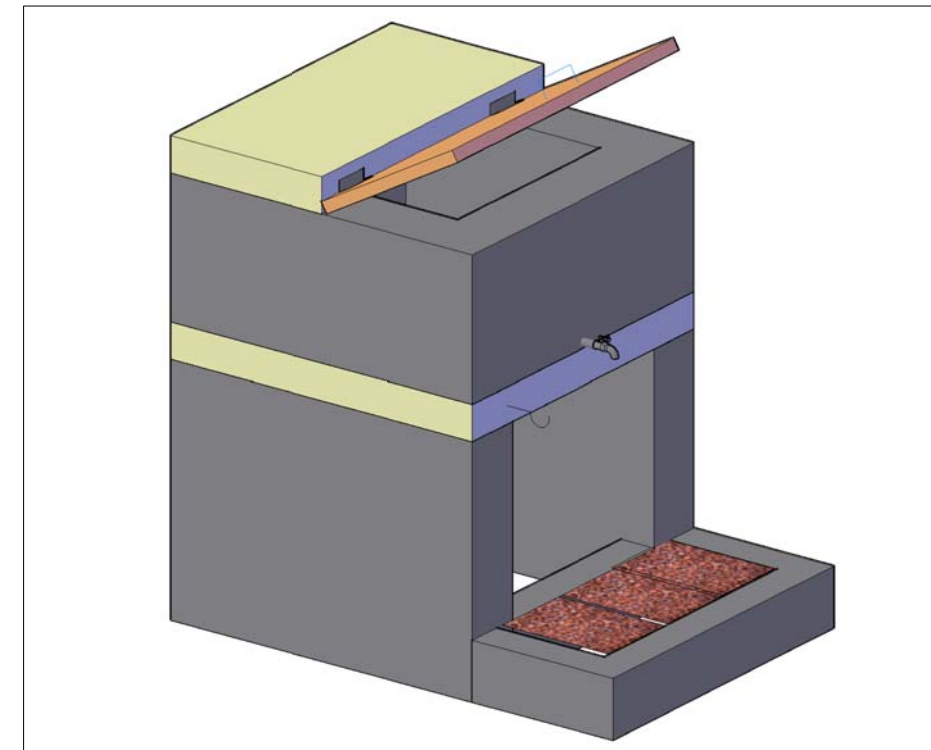
*PREPARED By:*

**DESIGN WORKING GROUP,  
WASH SECTOR, COX'S BAZAR**

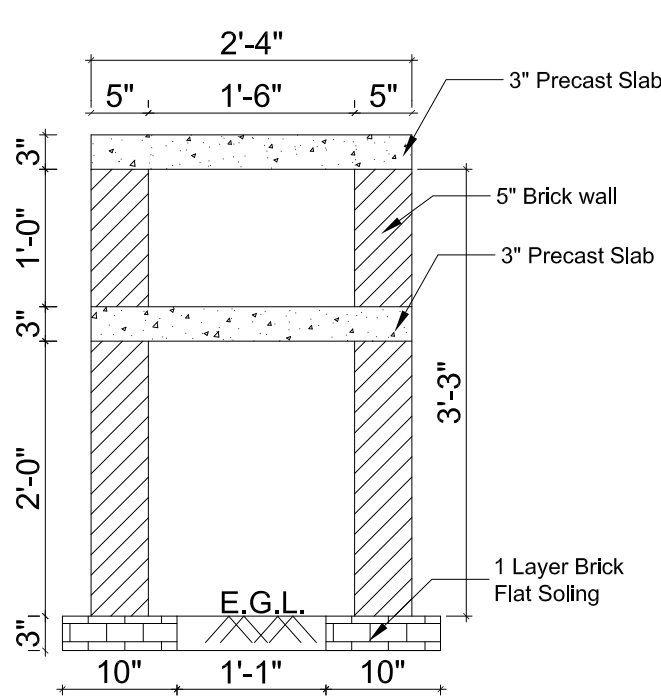




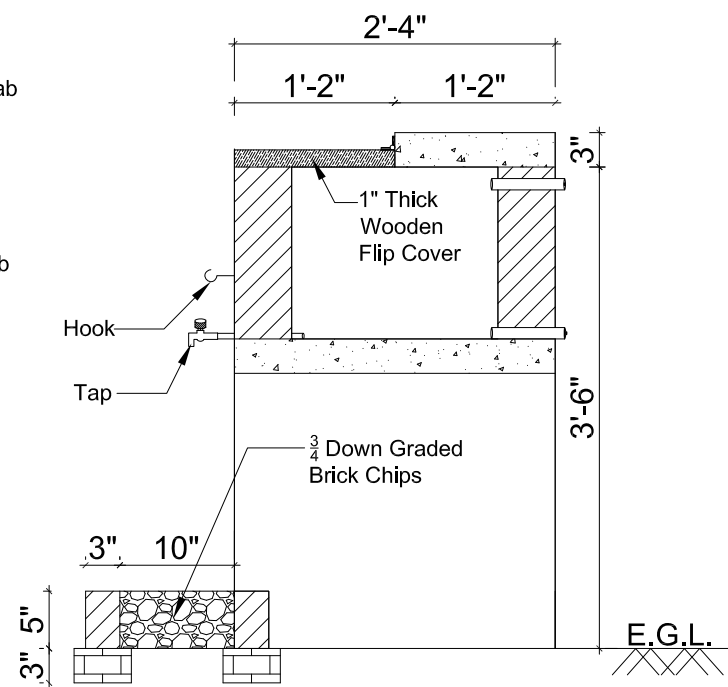
**PLAN VIEW**



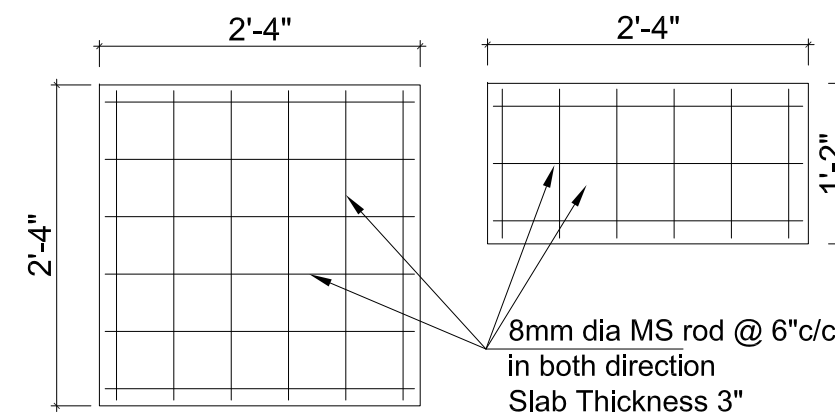
**3D View**



**SECTION (A-A)**



**SECTION (B-B)**



**Pre Cast Slab Details**

	Project	Model:	Design by:	Drawing Title	Date	Approved by	Page
	Design and Drawing of Unified Hand Washing Station	Brick Made Hand Washing Station	Design Working Group	Plan, Section & 3D View	March, 2023	WASH Sector	01

**Bill of Quantity**  
**Brick Made Hand Washing Station**

SI No	Description of Item	Quantity	Unit	Unit Price	Total Amount
				BDT	BDT
1	<b>Site Preparation &amp; Earth Excavation : 3"</b> Earth work in excavation of foundation , carrying and disposing of all excavated materials at a safe distance designated by the EIC, all types of soil except rocky gravelly, organic maintains proper slope, disposing of all back filling of sites of all excavated materials to a safe distance back filling of sites of original level etc, all complete to the direction of the EIC.	1.00	job	70	70
2	<b>5" Brick Wall :</b> 5" thick brick wall in Base of latrine finishing construction with first class bricks and cement mortar (1:4) and making bond with partition walls and properly raking out of joints between bricks, including necessary cleaning and soaking the bricks for at least 24 hours before use and screening. The work includes scaffolding, site cleaning, water carrying, electricity, curing at least for 7 days and other necessary charges. All work complete as per design and instruction of Engineer in-charge.	1.80	sqm	1,155	2074
5	<b>Brick Flat Soling :</b> One layer of brick flat soling in latrine floor with first class or picked jhama bricks including preparation of bed and filling the interstices with local coarse sand, cover the brick-soling with polythene sheeting, complete and accepted by the Engineer in-charge.	0.77	sqm	515	395
6	<b>Plastering &amp; Net finishing :</b> Minimum 12 mm thick cement plastering using mortar ratio (1:4) including skirting plastering at floor, inner surface and outer surface, finishing the corner, kobra & top-surface of wall. the work includes screening of sand cleaning the surface, scaffolding and curing at least for 7 days, water/electricity/other charges and as per drawing and instruction of the Engineer in-charge.	5.12	sqm	289	1481
7	<b>Precast RC Slab:</b> Supplying fitting and fixing (2'-4" X 2'-4") and (2'-4"X 1'-2") 3" thick pre cast RC slab as per drawing and accepted by the Engineer in-charge.	1.00	job	1,400	1400
8	<b>Top Flip Cover:</b> Supplying, fitting and fixing 14"x28" wooden flip cover with hinge etc. all complete and accepted by the Engineer.	1.00	nos	300	300
9	<b>Other Supplies &amp; Accessories fitting, fixing &amp; supplying</b>				
a	Supplying, fitting and fixing one side threaded GI pipe maintaining 0.5" dia and length 10"	3.00	nos	50	150
b	Supplying, fitting and fixing plastic tap of 0.5" dia	1.00	nos	150	150
c	GI thread plug, dia 0.5"	2.00	nos	50	100
d	3/4 down graded brick chips	1.00	cft	100	100
e	Supplying, fitting and fixing hook for soap hanging	1.00	nos	20	20
<b>Total Quoted Price</b>				<b>BDT</b>	<b>6239</b>

Note: Total amount of cost can be varied maximum  $\pm 5\%$

**Prepared by :**  
Latrine Design Group

**Reviewed by :**  
DPHE, Cox's Bazar

**Approved by :**  
Office of Refugee Relief and  
Repatriation Commissioner (RRRC),  
Cox's Bazar