

Items material pro reactor tank

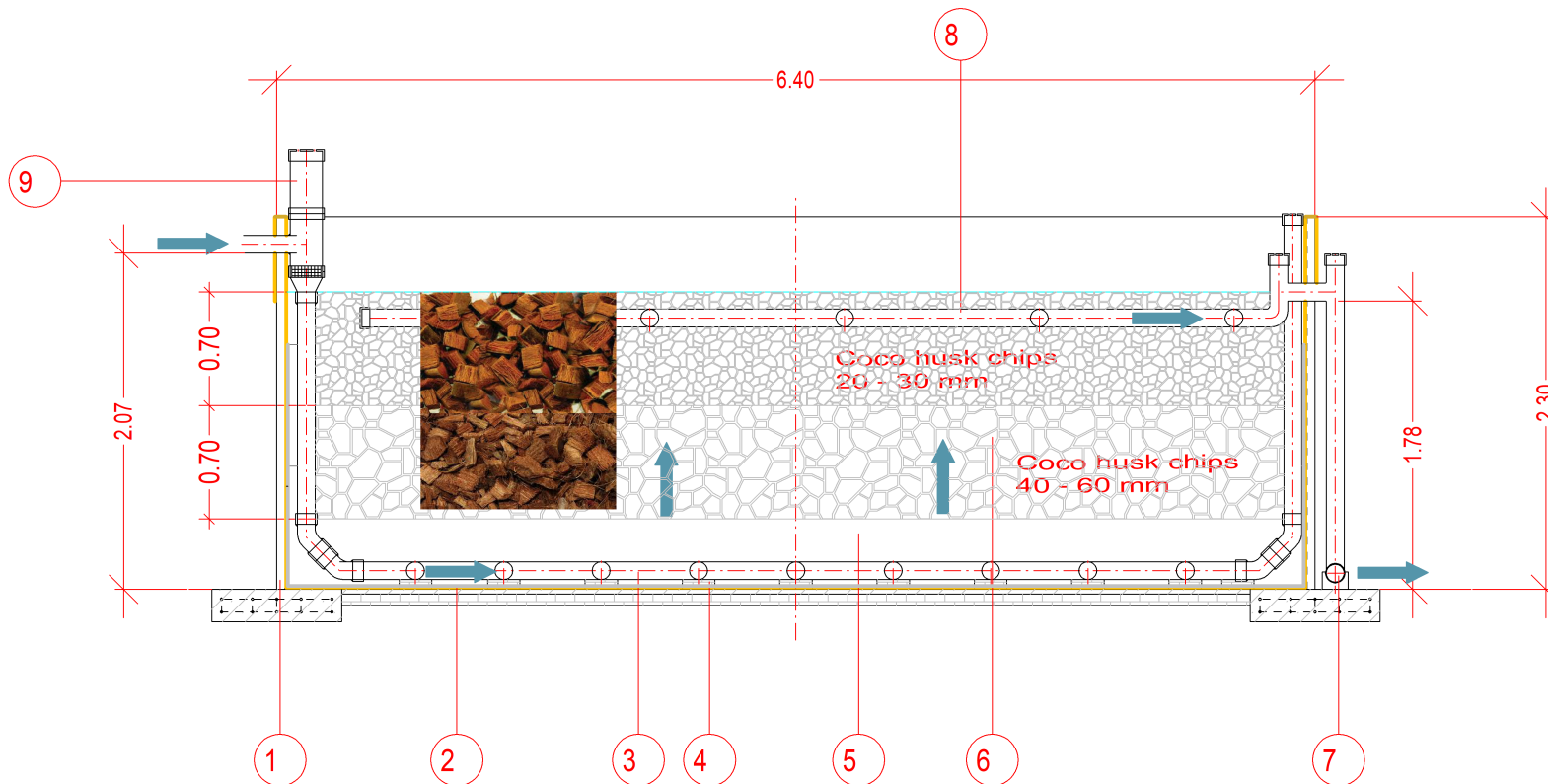
- OXFAM rigid water tank; D= 6.4 m x 0.8 corrugated galvanized steel tank; volume 75 m³; without roof; 1x bottom vavle 2 inch; ground preparation and foundation according to tank specification and local ground loading rating; 1 item
- EPDM synthetic rubber tank liner with 1.25 mm thickness, reinforcing scrim, welded to fit D=6,4 m and height of 2.3 m, allowing min. 300 mm turn down on outside with brass eyelets spaced at 1 m centres around edge. EPDM liner protected bothsides with geotextile 300 g/m², inside geotextile after filling the filter material to be cut at a height 1.5 m above the bottom
- Distribution layer: PVCU pipe D 110 mm PN10, length 55 m with 84x 10 mm boreholes on the bottom side!; 45° elbow D 110 mm fit to pipe 4 items; T-junction D 110 mm fit to pipe 20 items; cap D 110 mm fit to distribution arm pipe 20 items; cap D 110 mm fit to ventilation pipe with 2x 10 mm boreholes (DON'T GLUE joint)
- Spacer blocks: best class bricks placed under the distribution pipes; 84 items
- Filter material I: coco nut husk chips 40 - 60 mm in grain size, before procurement samples need to be approved by BORDA; 24 m³
- Filter material II: coco nut husk chips 20 - 30 mm in grain size, before procurement samples need to be approved by BORDA; 24 m³
- Out-side overflow pipe: PVCU pipe D 110 mm PN 10, with clamb system bolted onto the foundation, length 2.0 m; T-junction D 110 mm fit to pipe 1 item, cap D 110 mm fit to pipe with 2x 10 mm boreholes 1 item (DON'T GLUE joint)
- Collection layer: PVCU pipe D 110 mm PN10, length 30 m with 42x 15 mm boreholes on the top side!; 90° elbow D 110 mm fit to pipe 1 items; T-junction D 110 mm fit to pipe 11 items; cap D 110 mm fit to distribution arm pipe 10 items; cap D 110 mm fit to ventilation 2x 100 borehole (DON'T GLUE joint)
- Inlet: Flexible connector D 110 mm, PVCU pipe PN10, 2x D 200 mm length 400 mm (DON'T GLUE joint); reducer D 200 to D 110 mm, 1 item; end-cap D 200 mm fit to pipe with 4x 10 mm boreholes (DON'T GLUE the joint) 1 item; filter mesh stainless steel 3 mm mesh size 10 mm fit into the D 200 mm pipe

Notice:

- This is the property of BORDA and is not be copied or produced anywhere without permission of BORDA
- All dimensions are in [m] unless mentioned otherwise
- Dimensions related with the structural design are not given in this layout drawings
- All dimensions have to be checked and co-related with the structural design and any discrepancy or omission shall be brought to the notice
- According to the DEWATS quality management all indicated tolerances have to be kept and will be checked on site

Legend:

WL - Water level GL - Ground level
 BL - Bottom level BR - Baffled Reactor
 PGF - Planted gravel filter
 ABR - Anerobic baffled reactor
 PBL - Pipe inner bottom level



BORDA
 Bremen Overseas Research and
 Development Association

Am Deich 45
 D-28199 Bremen, Germany

www.borda.org

Date:	Name:
Work out:	06/01/2020
Proved:	

Scale:	
File:	OXFAM_CxB_Phase 2
Document:	DR 3.3
Project phase:	Detail Engineering

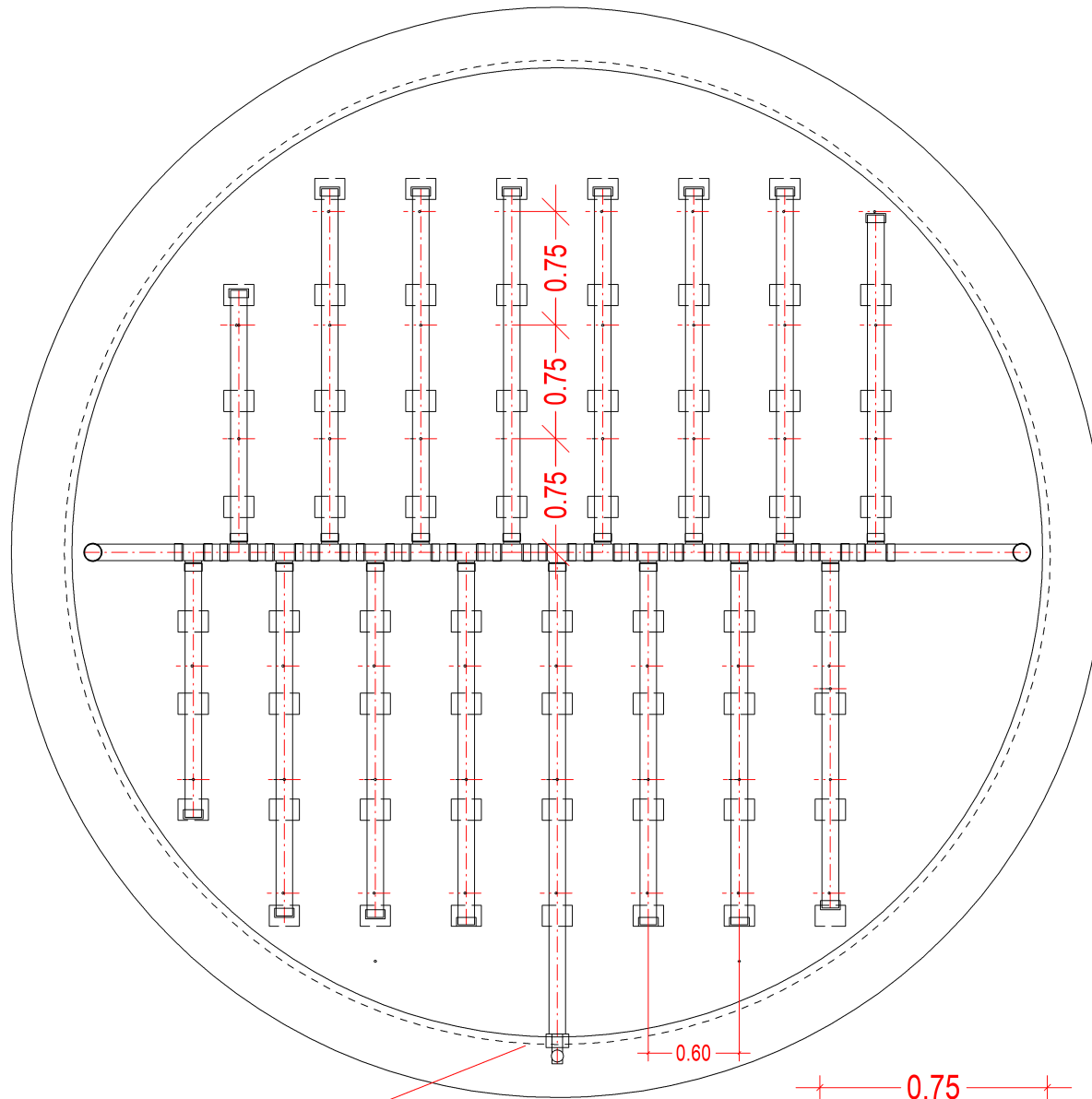
Client:	Oxfam Bangladesh
---------	------------------

Title:	Up-flow filter - cross section
--------	--------------------------------

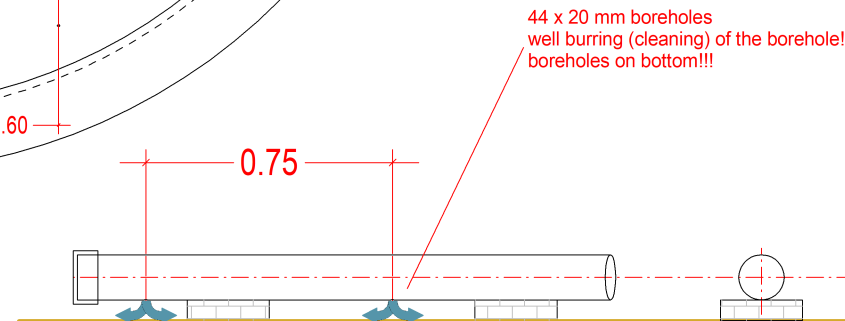
Project:	OXFAM-CxB FSPT Phase II
----------	-------------------------

3. Distribution layer: PVCU or HDPE pipe D 110 mm MPA 10, length 55 m with 84x 10 mm boreholes on the bottom side!; 45° elbow D 110 mm fit to pipe 4 items; T-junction D 110 mm fit to pipe 20 items; cap D 110 mm fit to distribution arm pipe 20 items; cap D 110 mm fit to ventilation pipe with 2x 10 mm boreholes (DON'T GLUE joint)

4. Spacer blocks: best class bricks placed under the distribution pipes; 84 items



Connect the distribution pipe with the bottom outlet in order to drain the distribution pipe system



Notice:

1. This is the property of BORDA and is not be copied or produced anywhere without permission of BORDA
2. All dimensions are in [m] unless mentioned otherwise
3. Dimensions related with the structural design are not given in this layout drawings
4. All dimensions have to be checked and co-related with the structural design and any discrepancy or omission shall be brought to the notice
5. According to the DEWATS quality management all indicated tolerances have to be kept and will be checked on site

Legend:

WL - Water level GL - Ground level
 BL - Bottom level BR - Baffled Reactor
 PGF- Planted gravel filter
 ABR- Anerobic baffled reactor
 PBL- Pipe inner bottom level

BORDA
 Bremen Overseas Research and
 Development Association

Am Deich 45
 D-28199 Bremen, Germany

www.borda.org

	Date:	Name:
Work out:	06/01/2020	
Proved:		

Scale:

File: OXFAM_CxB_Phase 2

Document: DR 3.4

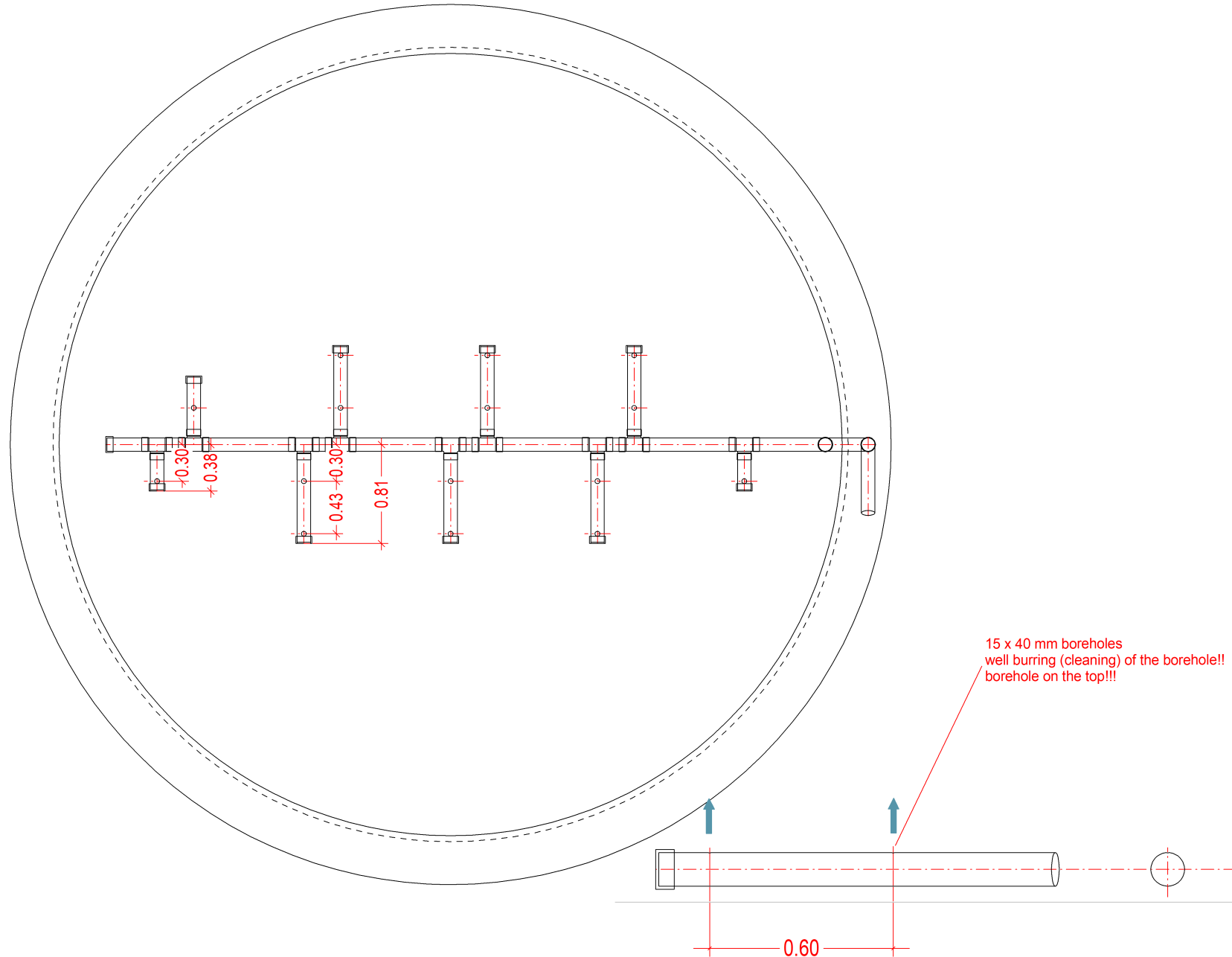
Project phase: Detail Engineering

Client: Oxfam Bangladesh

Title:
 Up-flow filter - Item 3 distribution system

Project:
 OXFAM-CxB FSPT Phase II

8. Collection layer: PVCU pipe D 110 mm PN10, length 30 m with 42x 15 mm boreholes on the top side!; 90° elbow D 110 mm fit to pipe 1 items; T-junction D 110 mm fit to pipe 11 items; cap D 110 mm fit to distribution arm pipe 10 items; cap D 110 mm fit to ventilation 2x 10mm borehole



Notice:

1. This is the property of BORDA and is not be copied or produced anywhere without permission of BORDA
2. All dimensions are in [m] unless mentioned otherwise
3. Dimensions related with the structural design are not given in this layout drawings
4. All dimensions have to be checked and co-related with the structural design and any discrepancy or omission shall be brought to the notice
5. According to the DEWATS quality management all indicated tolerances have to be kept and will be checked on site

Legend:

WL - Water level GL - Ground level
 BL - Bottom level BR - Baffled Reactor
 PGF- Planted gravel filter
 ABR- Anaerobic baffled reactor
 PBL- Pipe inner bottom level

BORDA
 Bremen Overseas Research and
 Development Association

Am Deich 45
 D-28199 Bremen, Germany

www.borda.org

	Date:	Name:
Work out:	06/01/2020	
Proved:	-	-

Scale:

File: OXFAM_CxB_Phase 2

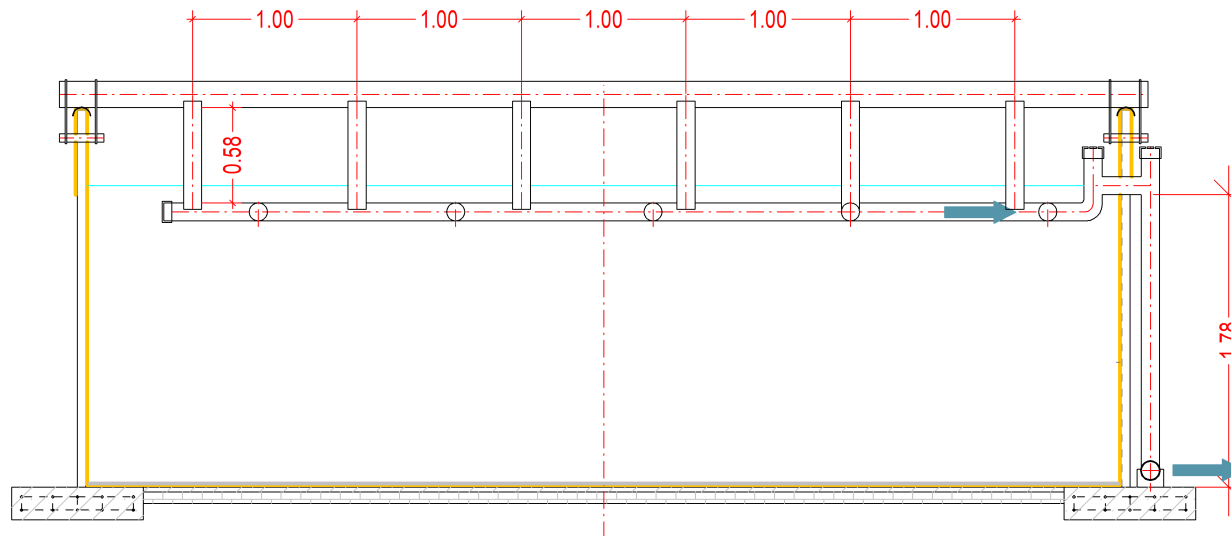
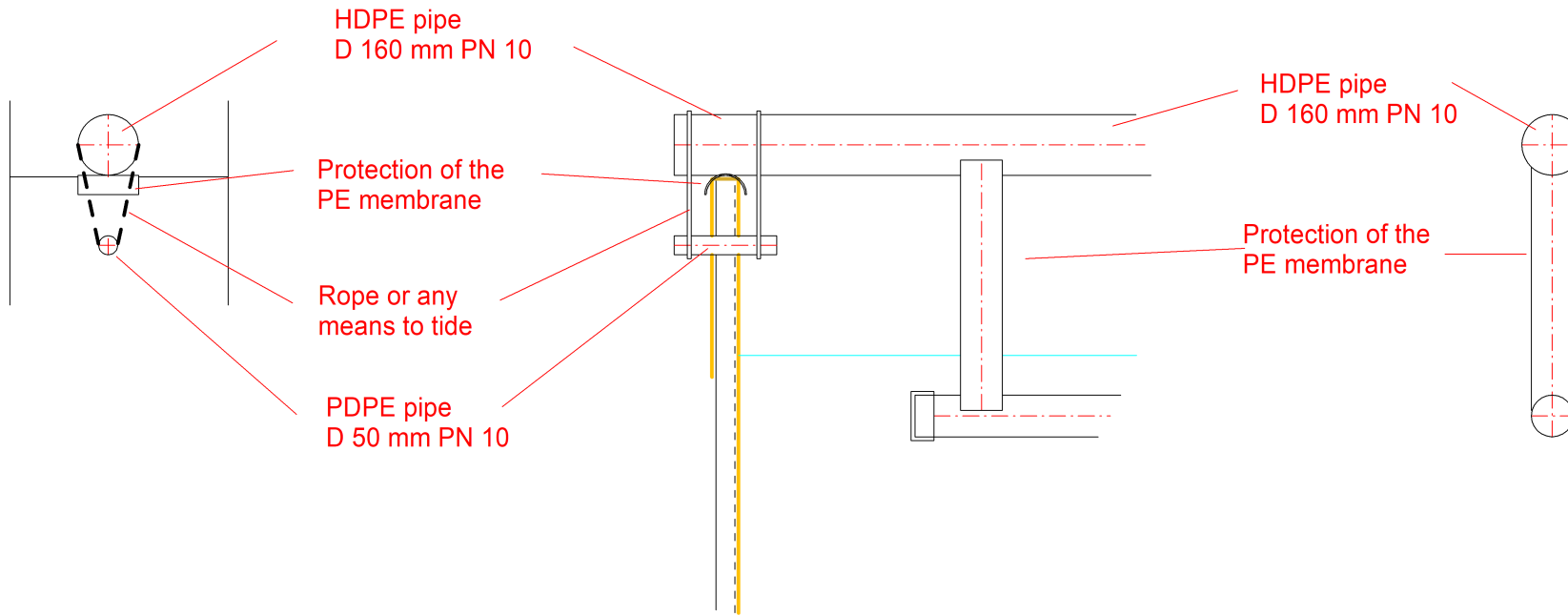
Document: DR 35

Project phase: Detail Engineering

Client: Oxfam Bangladesh

Title:
 Up-flow filter - Item 8 collection system

Project:
 OXFAM-CxB FSPT Phase II



Notice:

1. This is the property of BORDA and is not be copied or produced anywhere without permission of BORDA
2. All dimensions are in [m] unless mentioned otherwise
3. Dimensions related with the structural design are not given in this layout drawings
4. All dimensions have to be checked and co-related with the structural design and any discrepancy or omission shall be brought to the notice
5. According to the DEWATS quality management all indicated tolerances have to be kept and will be checked on site

Legend:

WL - Water level GL - Ground level
BL - Bottom level BR - Baffled Reactor
PGF- Planted gravel filter
ABR- Anaerobic baffled reactor
PBL- Pipe inner bottom level

BORDA
Bremen Overseas Research and
Development Association

Am Deich 45
D-28199 Bremen, Germany

www.borda.org

	Date:	Name:
Work out:	06/01/2020	
Proved:	-	-

Scale:

File: OXFAM_CxB_Phase 2

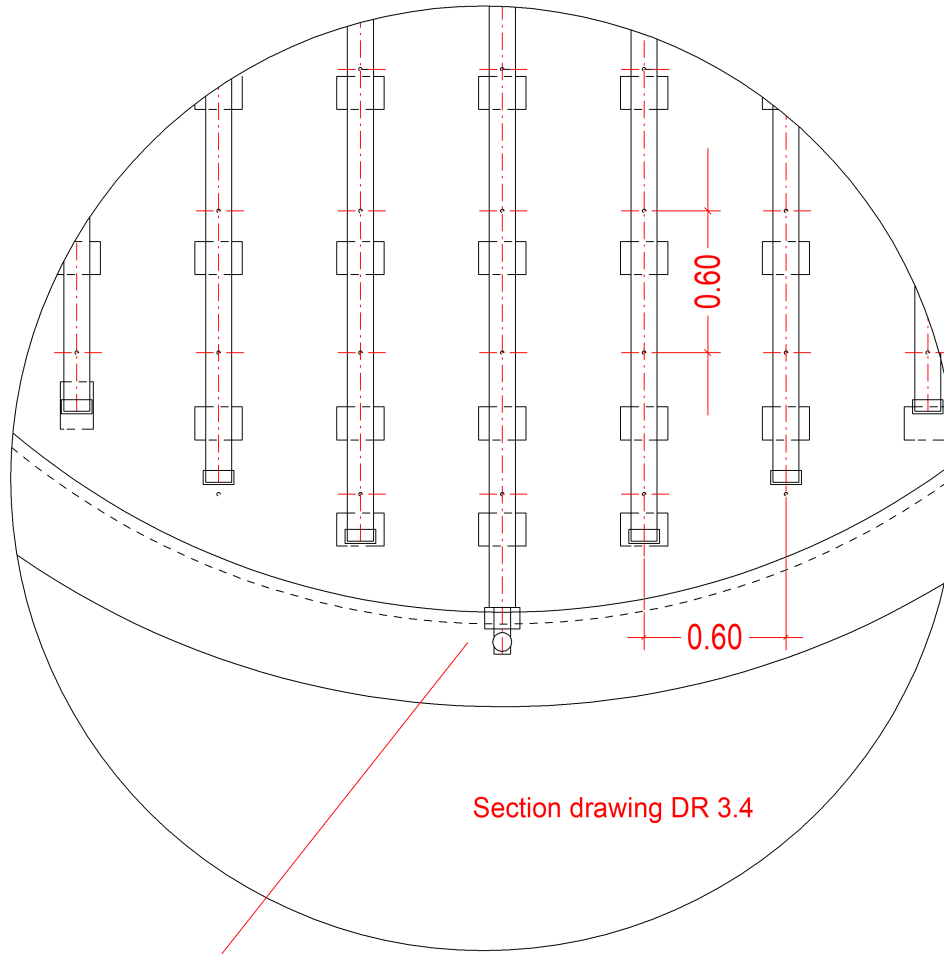
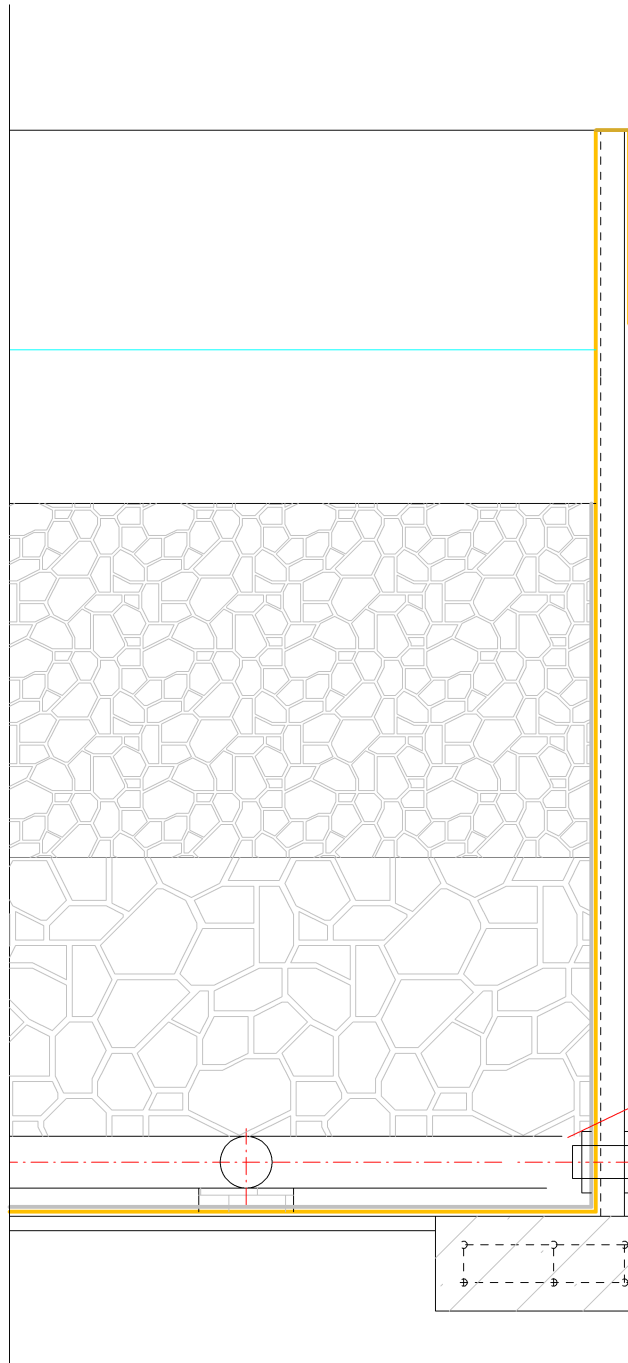
Document: DR 3.5.1

Project phase: Detail Engineering

Client: Oxfam Bangladesh

Title:
Up-flow filter - cross section

Project:
OXFAM-CxB FSPT Phase II



Connect the distribution pipe with the bottom outlet in order to drain the tank and through the distribution pipe system. By doing this settled sludge in the pipes and the filter material will be washed out.



Notice:

1. This is the property of BORDA and is not be copied or produced anywhere without permission of BORDA
2. All dimensions are in [m] unless mentioned otherwise
3. Dimensions related with the structural design are not given in this layout drawings
4. All dimensions have to be checked and co-related with the structural design and any discrepancy or omission shall be brought to the notice
5. According to the DEWATS quality management all indicated tolerances have to be kept and will be checked on site

Legend:

- WL - Water level GL - Ground level
- BL - Bottom level BR - Baffled Reactor
- PGF- Planted gravel filter
- ABR- Anaerobic baffled reactor
- PBL- Pipe inner bottom level

BORDA
Bremen Overseas Research and
Development Association

Am Deich 45
D-28199 Bremen, Germany

www.borda.org

	Date:	Name:
Work out:	10/2019	
Proved:		
Scale:		
File:	OXFAM_CxB_Phase 2	
Document:	DR.3.10	
Project phase:	Detail Engineering	
Client:	Oxfam Bangladesh	
Title:	Upflow filter - bottom outlet pipes	
Project:	OXFAM-CxB FSPT Phase II	